

SPECTRUM BREAKS
at the
Hartlands



THE AUTISM FRIENDLY HOLIDAY CENTRE

*A delightful Victorian Holiday Centre
situated in Shanklin on the south coast of
the beautiful and tranquil*

Isle of Wight

2019

Hartlands – The Autistic Friendly Holiday Centre

The name **SpectrumBreaks** was carefully chosen to reflect the purpose of the centre, its primary function to provide an inclusive break for people on the autistic spectrum with their families and carers, all in a relaxing environment which is entertaining, engaging, and educational.



Hartlands is the name of the building, originally named back in the early 1900's by a young couple who purchased the Victorian Villa after getting married and renamed it Hartland after their honeymoon destination, the romantic gesture was not lost on us and we happily kept the name.



About us

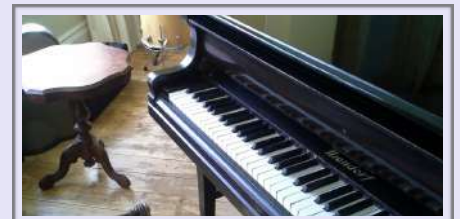
We are Elaine and Colin, parents of three children, the youngest now in his 20's was diagnosed with high dependency classic autism at two. As parents we understand the need and difficulty in finding holiday destinations that provide the right environment for the whole family. From the experience we gained and based on our son we designed the centre to provide quality self catering holiday accommodation with facilities to support the whole family, schools parties, and care homes with members of any age on the autistic spectrum. We wanted to create a holiday centre where we would want to come and where all our family could feel at home, so in 2011 we sold our house and used all our savings to purchase the derelict Hartlands Hotel. Over the next 5 years using all the experience we had gained and help from a close friend and leading specialist in setting up additional needs centres Dr.Viv Hinchcliffe, we created SpectrumBreaks at Hartlands.



The Facilities

The centre has facilities for the whole family, from a sensory area to a fully equipped gym. The following are available to anyone staying at the Hartlands....

- Games room with 2 pool tables, board games, and a TV.
- Music room with 2 pianos, guitars, trumpets, trombone, ten horn, clarinet, saxophone, recorders, drum kit, xylophone, accordion, didgeridoos, bongos, and an array of percussion extras. All to be played and explored by anyone staying with us.
- IT room with touch screen computers, installed games, and connected to the internet.
- Cinema area with a large 150"+ screen and sound system connected to a computer system with over 600 films available.
- Very large sensory room with bean bags, balls, sensory toys, and multiple light effects.
- Food and drink area next to the sensory area with more sensory sounds.
- Art room with various materials to be creative with.
- Fully equipped gym and infrared sauna.
- 12 meter indoor heated swimming pool heated to 34 degrees with sensory lights and sound system. The pool can be booked for private use, assistance can also be provided if needed.
- Garden areas with swings and trampoline.



The Apartments

All apartments have been designed to a high standard with fully fitted kitchens including ovens, safety induction hobs, microwaves, fridge-freezers, dish washers, washing machines, and tumble dryers. The lounges have 42" TV's with comfortable sofas. There are four apartments in total, each named after a famous person who it is believed had autism, and each apartment is themed to reflect the person.

The apartments are...

Emily Cottage



1. Emily Cottage; named after Emily Dickinson the famous poet considered among the greatest poets in English literature, she is known for being "The poet of paradox". This apartment has a real cottage feel; situated on the ground floor it sleeps 6 in 3 bedrooms with 1 king size and 4 singles. This apartment is dog friendly and has a large dog area attached. The twin single bedrooms have locks on the windows and the doors can be secured at night if required. The bedrooms all have en-suite bathrooms with a roll-top bath in the master bedroom and safety showers in the twin single bedrooms, all bathrooms have shut-off valves and lockable bathroom doors. The front door has a combination lock and a star key lock can be supplied on request for extra security.

The apartment can be booked all year round starting any day of the week for a minimum of 3 nights, except the school summer holidays when bookings are for a minimum of 7 nights Saturday to Saturday only.

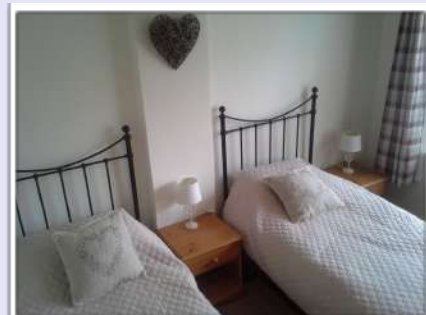
Prices vary depending on the number of nights booked and the time of year (low, medium, high, peak season), prices range from £414 for 3 nights in low season to £1554 for 7 nights in peak season.

All the facilities are included in the price of the apartment. All the single beds have triple bed mattress protection and duvet protection for peace of mind, additionally the king size has double mattress protection. Bath and Hand towels are provided as standard.

To see more pictures of the apartment please visit www.spectrumbreaks.co.uk – select the 'Apartments' tabs - click on the Emily picture.

To book please visit www.spectrumbreaks.co.uk – select the apartments tab - click on the 'Availability and Prices' link under the Emily picture.

Red Funnel Ferry tickets from Southampton to East Cowes can be booked through us for £60 return low season to £120 return peak season 1 car and all passengers.



The Apartments *(continued)*

Albert's Pad

2. Albert's Pad; named after Albert Einstein the famous scientist most known for his Theory of Relativity which changed modern science thinking of the universe. This apartment has a real lodge feel clad in white wood with black windows; situated on the ground floor it sleeps 3 in 2 bedrooms with 1 double size and 1 single. There is a shared bathroom with a safety shower and shut-off valves and lockable bathroom door. The apartment has a private garden area to the rear accessed through double doors in the lounge or a single door in the master bedroom; it has seating and a table for the warm summer evenings or enjoying a nice morning tea in the sun. The front door has a combination lock and all the windows and rear doors have locks. This apartment is pet free.

The apartment can be booked all year round starting any day of the week for a minimum of 3 nights, except the school summer holidays when bookings are for a minimum of 7 nights Saturday to Saturday only. Prices vary depending on the number of nights booked and the time of year (low, medium, high, peak season), prices range from £309 for 3 nights in low season to £1162 for 7 nights in peak season.

All the facilities are included in the price of the apartment. The single bed has triple bed mattress protection and duvet protection for peace of mind, additionally the double size has double mattress protection. Bath and Hand towels are provided as standard.

To see more pictures of the apartment please visit www.spectrumbreaks.co.uk – select the 'Apartments' tabs - click on the Albert picture.

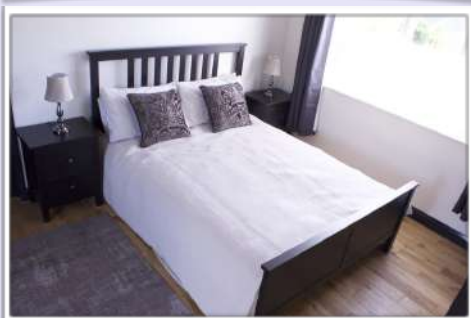
To book please visit www.spectrumbreaks.co.uk – select the apartments tab - click on the 'Availability and Prices' link under the Albert picture.

Red Funnel Ferry tickets from Southampton to East Cowes can be booked through us for £60 return low season to £120 return peak season 1 car and all passengers.



The Apartments *(continued)*

Isaac's Suite



3. Isaac's Suite; named after Isaac Newton the famous scientist and mathematician famous for his law of gravitation, instrumental in the scientific revolution of the 17th century. This apartment has a real modern feel decorated in a calming monochrome colour scheme with LED up lighting; situated on the first floor it sleeps 6 in 3 bedrooms with 1 king size and 4 singles. The kitchen can be secured with a star key if required. It has a large safe balcony to the front covered in green rubber safety flooring. The twin single and master bedrooms have locks on the windows and the doors can be secured at night if required. The bedrooms all have en-suite bathrooms with a roll-top bath in the master bedroom and safety showers in the twin single bedrooms, all bathrooms have shut-off valves and lockable bathroom doors. The front door has a combination lock and a star key lock can be supplied on request for extra security. This apartment is pet free.

The apartment can be booked all year round starting any day of the week for a minimum of 3 nights, except the school summer holidays when bookings are for a minimum of 7 nights Saturday to Saturday only. Prices vary depending on the number of nights booked and the time of year (low, medium, high, peak season), prices range from £414 for 3 nights in low season to £1554 for 7 nights in peak season.

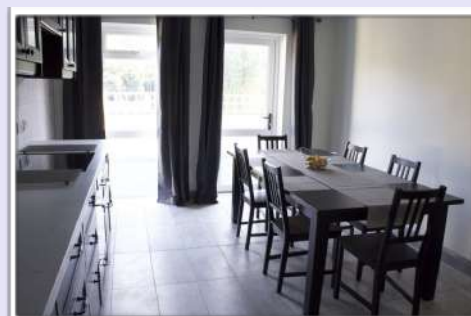
All the facilities are included in the price of the apartment.

All the single beds have triple bed mattress protection and duvet protection for peace of mind, additionally the king size has double mattress protection. Bath and Hand towels are provided as standard.

To see more pictures of the apartment please visit www.spectrumbreaks.co.uk – select the 'Apartments' tabs - click on the Isaac picture.

To book please visit www.spectrumbreaks.co.uk – select the apartments tab - click on the 'Availability and Prices' link under the Isaac picture.

Red Funnel Ferry tickets from Southampton to East Cowes can be booked through us for £60 return low season to £120 return peak season 1 car and all passengers.



The Apartments *(continued)*

Vincent Gallery



4. Vincent Gallery; named after Vincent Van Gogh the famous painter who was a post- impressionist painter notable for its beauty, emotion and colour. This apartment has a real nature feel decorated in a light green colour scheme; situated on the first floor it sleeps 8 in 4 bedrooms with 2 king size and 4 singles. The kitchen and lounge can be secured with a star key if required. It has a large safe balcony to the rear. The twin single and master bedrooms have locks on the windows and the doors can be secured at night if required. The bedrooms all have en-suite bathrooms with a roll-top bath in the master bedrooms and safety showers in the twin single bedrooms, all bathrooms have shut-off valves and lockable bathroom doors. The front door has a combination lock and a star key lock can be supplied on request for extra security. This apartment is pet free



The apartment can be booked all year round starting any day of the week for a minimum of 3 nights, except the school summer holidays when bookings are for a minimum of 7 nights Saturday to Saturday only. Prices vary depending on the number of nights booked and the time of year (low, medium, high, peak season), prices range from £516 for 3 nights in low season to £1939 for 7 nights in peak season.

All the facilities are included in the price of the apartment. All the single beds have triple bed mattress protection and duvet protection for peace of mind, additionally the king size has double mattress protection. Bath and Hand towels are provided as standard.

To see more pictures of the apartment please visit www.spectrumbreaks.co.uk – select the ‘Apartments’ tabs - click on the Vincent picture.

To book please visit www.spectrumbreaks.co.uk – select the apartments tab - click on the ‘Availability and Prices’ link under the Vincent picture.

Red Funnel Ferry tickets from Southampton to East Cowes can be booked through us for £60 return low season to £120 return peak season 1 car and all passengers.

Things to do...

When deciding on the location for the centre we investigated the whole of the UK, our objective was simple, to find the best place in the UK for an autism friendly holiday. Eventually after 2 years of searching and finally with the help of Escape to the Country we settled on the Isle of Wight. Quite simply it had everything we were looking for, great beaches, plenty of beautiful scenery, lots to do, and a friendly and welcoming atmosphere. We have now lived on the island for 5 years and it continues to deliver for the whole family. Here are just a few things to do on the Isle of Wight, most of them within 20 minutes from the centre...

Beaches

The Isle of Wight has 57 miles of coastline and contains some of the best beaches in the UK. There is a huge variety of beaches from beautiful large sandy beaches such as Shanklin & Sandown to small secluded beaches such as Steephill Cove. They are perfect for all sorts of activities such as water sports, swimming, relaxing, walking and sightseeing; here are just some of our favourites....



Shanklin Beach less than 1 mile from the Centre

Shanklin Beach is one of the Isle of Wight's best-known beaches with long stretches of golden sand and a gently sloping shore it is ideal for sunbathing or swimming. The beach is over a mile long in total so there is plenty of space even in the height of the summer season; it has a traditional 'bucket & spade' atmosphere and currently holds a Seaside award. There are a number of cafes and bars around for those wanting to eat out and if you tire of sunbathing and swimming you can try your hand at crazy golf, bowling, arcades, go-karting and for the little ones there are some great indoor play areas.



Sandown Bay next to Shanklin Beach

A very popular beach during the summer months, Sandown beach offers everything you could want from a day by the sea, traditional seaside cafes, souvenir and beach shops, along with deckchairs, sun loungers and windbreaks for hire means you can set up camp for the day without worrying about bringing everything with you. There is also the pier with amusements & bowling.





Ventnor Beach is less than 4 miles from the Hartlands

Ventnor beach is the southernmost holiday beach on the Isle of Wight and is well-loved by locals and visitors alike. Nestled in the bay beneath the tumbling tiers of the Victorian town, Ventnor's red shingle and golden sand beach has vintage beach huts that once had wheels and transported the gentry down to the sea to bathe as they were bathing machines.



The beach huts can be hired on a daily basis from the hut on the sea wall, as can deckchairs, sun loungers and wind breaks, which are hammered into the sand for you with an old wooden mallet.

Yaverland Beach is at the end of Sandown Bay

Yaverland Beach is one of the Isle of Wight's best beaches, providing a long stretch of sand and great swimming waters for children and families. Yaverland has a few small rocks dotted here and there and when the tide is out the sandy beach expands across acres of flat sand.

The beach stretches north east from the Yaverland Sailing and Yacht Club all the way to the foot of the chalk cliffs of Culver Down. Pathways through the undergrowth on the cliffs lead from the coastal path to the beach or vice versa.



The orange sandstone cliffs gradually increase in height as they move towards the white chalk of Culver cliff and it is around here that fossil remains can be found – this is one of the Isle of Wight's Dinosaur beaches! Be sure you book a guided fossil walk at nearby Dinosaur Isle so that you can discover your own piece of pre-history.



St Helens Beach on the East coast of the Isle of Wight

St Helens Beach can be accessed by either foot or car and will not disappoint with a backdrop of trees it is a beautiful beach. There is a particularly good café/restaurant and children will love to explore the rock pools when the tide is out. St. Helens looks out across the Solent and the shipping Lanes and there is something to keep the whole family occupied.

Seagrove Beach



Seagrove Bay sits between Seaview beach and Priory Bay on the north east coast and boasts some of the largest and most imposing seaside properties on the Isle of Wight. When the tide is out Seagrove Bay has a large expanse of golden sands, making it popular for a whole range of beach activities and watersports. There is also a slipway running down into the sea which is a regular launching platform for boats. There are toilet facilities at the bottom of the lane which



Walks

The Isle of Wight is one of the top destinations in the UK for walkers, with a network of over 500 miles of footpaths weaving their way through contrasting landscapes and coastline. There's so much varied countryside and coast to choose from around the Island that you'll be spoiled for choice and you can access pretty much every nook and cranny. If it's fields and forests that you're after to meander through or rugged chalk downs or the 64 miles of coastal paths which take you to dramatic cliff tops, rocky coves and estuaries, then the Isle of Wight is the perfect walker's paradise.



Gardens

You'll find a huge range of gardens on your travels around the Island, from vast landscapes such as Appuldurcombe and Osborne House to perfect English country gardens and the famous Ventnor botanical gardens with an impressive collection of rare, subtropical and exotic plants.



Theme Parks



For families and the thrill seekers amongst you look no further than the great variety of theme park adventures on the Isle of Wight. Whether it's rollercoaster's and excitement that you seek, or pirates, fantasy and adventure, Isle of Wight theme parks have it all! Go on an adventure and visit the UK's oldest theme park, Blackgang Chine where you can walk with the animated dinosaurs, take a trip through the American Wild West or adventure with pirates and smugglers. Visit Robin Hill with its 88 acres of stunning countryside with a mix of rides, attractions and falconry, or at night take a walk through the magical illuminated woods. Over the west side of the island there is the chairlift ride against the backdrop of the Isle of Wight's most famous landmark "The Needles".



Pubs and Restaurants



From fine dining by the sea to classic pub lunches in picturesque villages there is something for everyone and all with a warm welcome. As there are so many to choose from on the Island here are just a few local to Hartlands (there are many more)...

Vernon Cottage in Shanklin Old Village is a lovely family-friendly fresh food restaurant renowned for its 'Fabulous Homemade Food' – delicious meat, fish and vegetarian dishes using local seasonal produce whenever possible – plus truly scrumptious homemade strawberry cream teas, and one of the best Homemade Cakes



The Old Thatch Tearooms was initially built in 1690 as two or three fisherman's cottages and it is believed to be the oldest building in Shanklin. By 1940, after being used by various other businesses, it was transformed into a Teashop and over the years has metamorphosed into the beautiful Teashop you see today.

Fisherman's Cottage is nestled just beneath Shanklin Chine in an enviable location at the far end of Shanklin Beach. The town's original thatched dining pub on the beach dating 1817. It is famed for its friendly and welcoming atmosphere and its delicious home cooked food, specialising in seafood which can be found on the Daily Specials Board.



The Waterfront is situated in a superb location right on the Shanklin seafront with panoramic sea views and just a stone's throw from the sand. A free house offering a wide selection of Isle of Wight ales, lagers, wines & spirits, together with a straightforward, homely menu that features local steaks and seafood in addition to the usual seaside favourites.

Museums

The Isle of Wight is full of history and museums, from the Jurassic era, through Roman times, to more recent steam trains. Here is a list of just a few...

1. Osborne House of Queen Victoria
2. Dinosaur Isle Museum
3. Appuldurcombe House
4. Newport & Brading Roman Villas
5. Bembridge Watermill
6. Isle of Wight Steam Railways
(with working steam trains and regular trips)
7. Classic Boat Museum
8. Lifeboat Museum
9. The Isle of Wight Shipwreck museum
10. Bus and Coach Museum
11. Wight Military and Heritage museum
12. Cowes Maritime Museum



Zoos

The Isle of Wight features a large and brilliant selection of animal attractions, wildlife parks and zoos. On the Island you can visit a farm and meet sheep, cows, chickens and pigs as well as donkeys, rabbits and guinea pigs – some with family friendly areas where you can see them up close. At other attractions you'll see some of the world's most beautiful and rare animals, ranging from tigers, lions and leopards to monkeys, meerkats and lemurs. Here are a few to visit...

1. Isle of Wight Zoo famous for its rescued Tigers, from primates to powerful predators, the residents of The Isle of Wight Zoo will charm and amaze you.
2. Amazon World with exotic animals including Crocodiles, marmosets, penguins, flamingos, otters, ocelot, monkeys and more.
3. Monkey Haven is a multi award-winning animal sanctuary where you can learn about primates at Monkey University and meet the mischievous monkeys.
4. Butterfly World where you can take your time to explore and watch butterflies dance in the air around you while enjoying the natural environment created for them.
5. Tapnell Farm where you can meet friendly wallabies, spend time with rabbits and guinea pigs in Pets Corner, and see sheep, pigs, meerkats and even alpacas.
6. West Wight Alpacas nestled in the tranquil countryside of the West Wight, walk around the farm and meet the alpacas, llamas, pigs, goats, sheep and more.



Castles & Forts



The fortifications of the Isle of Wight provide a historic insight into the Island's strategic role throughout history. There are a number of Castles and Forts to visit where you can really get a sense of history and even see demonstrations and get involved.

Carisbrooke is a striking Norman castle atop a high hill above Newport. It was here that Charles I was imprisoned in 1647 before his final journey to London and death. The king's bedchamber has been preserved, as has the window through which he attempted to escape.



The Needles Old Battery on the Isle of Wight is surely one of our more unusual properties. Perched on this exposed, windswept headland, looking out onto the iconic Needles Rocks, the Battery is a stark reminder of an age when England feared attack by the French under Napoleon III.

Yarmouth Castle

Yarmouth Castle was built by Henry VIII to guard the entry to Yarmouth's port from the Solent. Finished in 1547, this was the last castle to be built in Henry's ambitious system of coastal defences and the first to adopt the new 'arrowhead' artillery bastion style.



Fort Victoria was completed in 1855, commissioned by Queen Victoria in response to the threat of a French invasion. The fort was in active use by various military units until 1962 when the Isle of Wight Council purchased it. There are many signs of its military past dotted around the site including some of its cannons, one on a replica mount in its original position.

Bembridge Fort stands on the crest of Bembridge Down, with fantastic views in all directions. A series of forts built from 1862 to counter the threat of a French invasion. The forts were called 'Palmerston Follies' after the Prime Minister, Lord Palmerston, and were a subject of ridicule after the threat diminished, and most never saw military action or fired a single shot.



Contact us

We hope this brochure gives you some idea of what is on offer at the Hartlands for the whole family, if you think it would be a place for you to relax and enjoy a holiday we recommend you visit our web site at www.spectrumbreaks.co.uk and take a look at the reviews from many of the guests that have stayed

Here is just a couple to get you started, there are over 80 to view...

August 2018 - Emily

Wonderful - Fantastic - Relaxing - Enjoyable

It's so wonderful here! The layout is beautiful and really well thought through. The pool was fantastic and so relaxing and enjoyable, as was the sensory room and cinema. We also loved the music room, so much to try out! The whole place has such a good feel and everyone is so welcoming and kind.

We all were very happy here and really loved our stay!

Thank you x x

August 2018 - Isaac

Truly lovely - High standard - Relaxing - Calming

We have had a truly lovely holiday here in Isaac apartment. The apartment is finished to such a high standard with every facility you could possibly think of at your fingertips. The environment throughout is so relaxing and calming and we were able to have a proper rest! Harry, our autistic son, has loved being here and felt completely at home in the flat, the sensory room, the garden and music room. The pool is amazing too! Thank you so much for your hospitality. Will definitely be back soon!

We also hope you get some idea of the amazing amount of attractions there are to visit on the Isle of Wight along with the beautiful beaches and stunning scenery. The Island truly is an amazing place to visit and we are sure you will not be disappointed.

If you would like more information please do contact us at support@spectrumbreaks.co.uk or call us on **01983 864 885** and we will be happy to help.

We cater for families, care homes, schools and individuals with care provision. Apartments can be booked individually, together or the whole centre if required.



If you are thinking of booking please visit our web site at www.spectrumbreaks.co.uk and click the **book now** button you will see the 4 apartment's availability, and select the dates to see the prices.

Alternatively call us on **01983 864 885**.

